



XDA Atom..... 2



XDA II 2



XDA II s..... 2



XDA Mini..... 2



X Phone – Customers with an X phone will need to download the Australian Telco Update. They can do this from www.myxda.com

i-mate



Jam..... 2



Pocket PC..... 2



Smartphone 2..... 7



Ipaq h6365..... 2



Ipaq hw6500..... 2



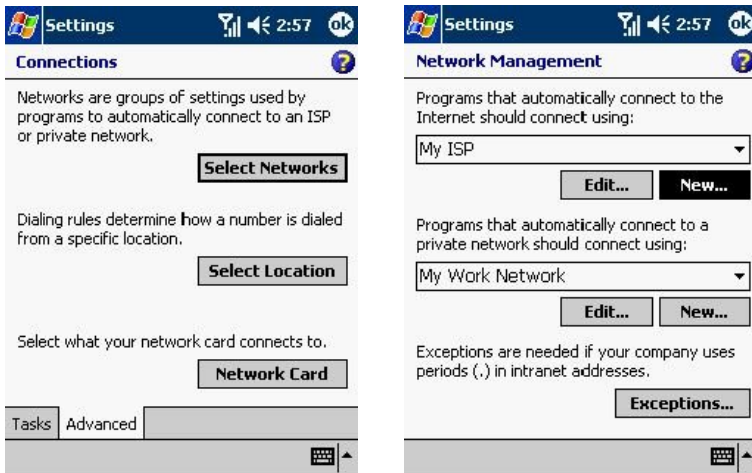
Ipaq hw6515..... 2

Steps to Configure GPRS Settings For MMS

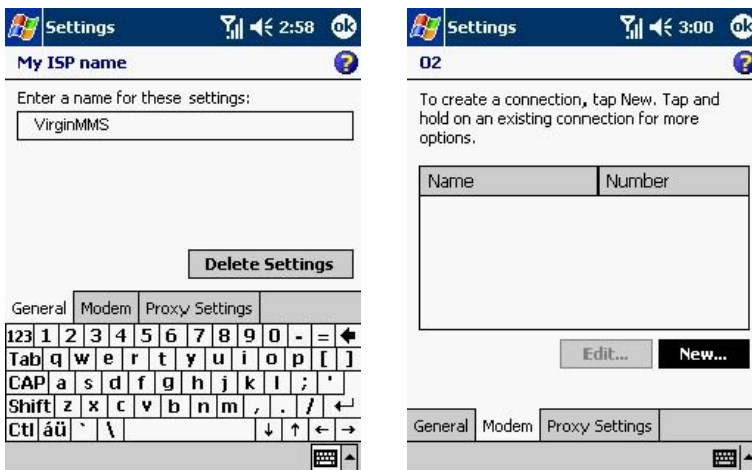
Start > Settings > Connections Tab > Connections



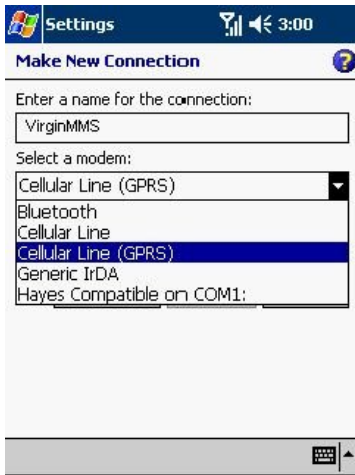
Tap On the Advanced tab > tap on Select networks > Tap On New



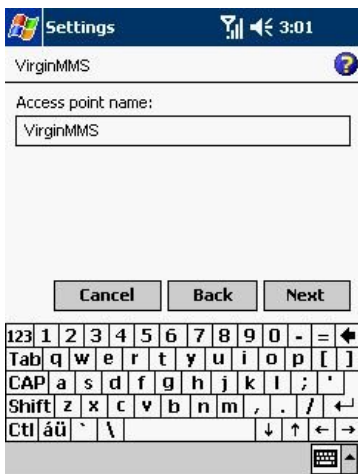
Enter VirginMMS As the Settings Name > Go to Modem tab > Tap New to add a Connection



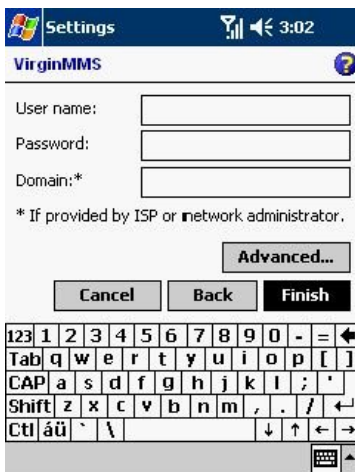
Enter the Connection name VirginMMS > select the modem type Cellular Line (GPRS) > Tap Next



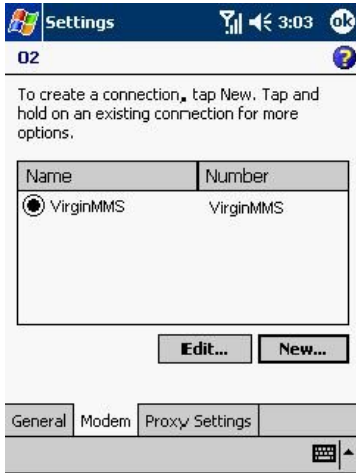
Enter the Access point name VirginMMS > Tap Next



Username, Password, & domain should be left blank > Tap Finish



When you finish, you will see the following screen. A connection named VirginMMS is added. Tap OK.



MMS Software Setup

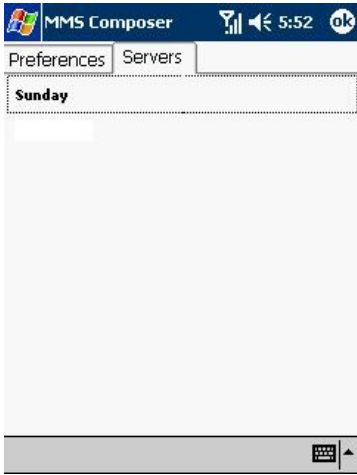
O2 XDA I follow the steps in black
O2 XDA I S & XDA mini Follow the steps Green
HP Ipaq's follow the purple Steps
Atom MMS Settings follow the blue steps

Tap Start > Programs > MMS Composer
Tap Start > Programs > Messaging
Tap Start > Inobx
Open MMS Inbox

Tap Tools > Options
Open the MMS Inbox > Tools > MMS Settings
Open the MMS Inbox > Tools > MMS Settings
Select Menu



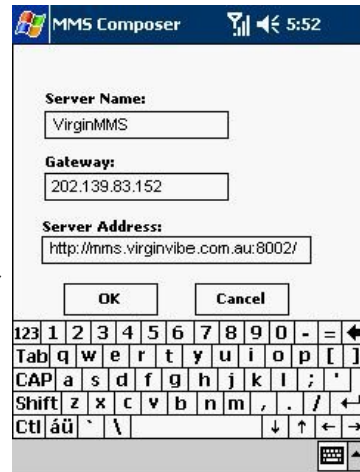
Tap on the servers Tab > Tap and hold on any empty space > select New
 Tap on the servers Tab > Select New
 Tap on the servers Tab > Select New
 Select Active profile > Select New



Enter the Server Name, Gateway and Server Address. Tap OK to save.
 Enter the Server Name, Gateway, Port, and Server Address. Tap OK to save.
 Enter the Server Name, Gateway, Port, and Server Address. Tap OK to save
 Enter the Name, MMSC URL, Data Connection, Gateway, IP, Port, Tap Done

Name = VirginMMS
 MMSC = <http://mms.virginbie.com.au:8002/>
 Data Connection = VirginMMS
 Gateway = Wap 1.0
 Ip address = 202.139.83.152
 Port = 9201

Server Name: VirginMMS
 Gateway: 202.139.83.152
 Server address: <http://mms.virginvibe.com.au:8002/>



Server Name: VirginMMS
 Gateway: 202.139.83.152
 Port: 9201
 Server address: <http://mms.virginvibe.com.au:8002/>

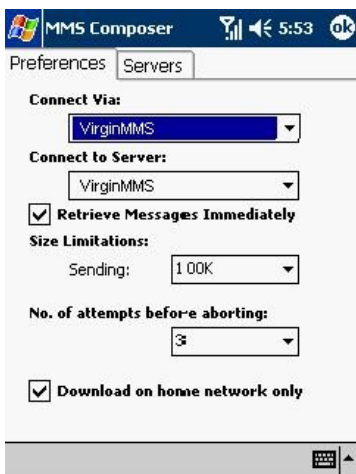
Server Name: VirginMMS
 Gateway: 202.139.83.152
 Port: 9201
 Server address: <http://mms.virginvibe.com.au:8002/>



A new server setting is added
 A new server setting is added > Set this as the default
 A new server setting is added
 Select VirginMMS as the active profile



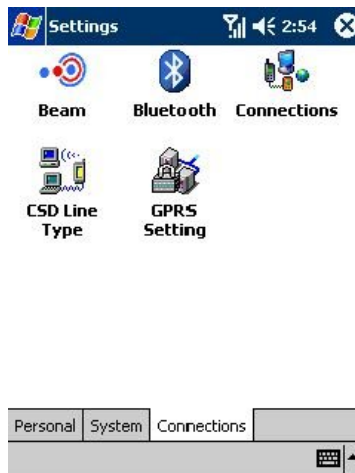
Go to the Preferences Tab > Select the Connect Via > VirginMMS > Connect to Server > VirginMMS
 Go to the Preferences Tab > Select the Connect Via > VirginMMS
 Go to the Preferences Tab > Select the Connect Via > VirginMMS > Connect to Server > VirginMMS



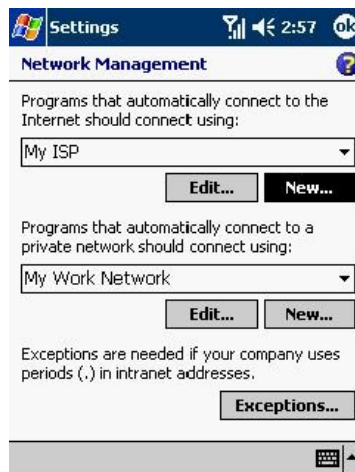
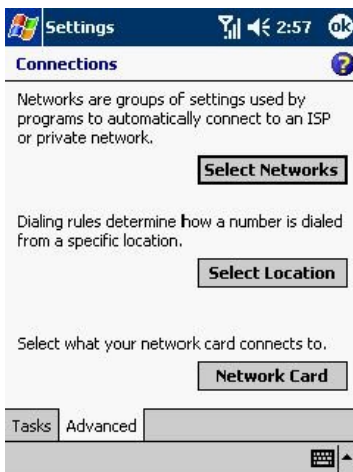
Tap ok to save and exit.

Settings For GPRS WAP

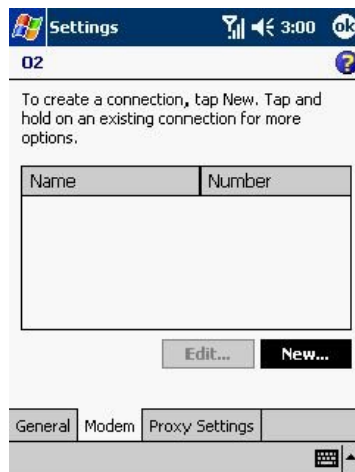
Start > Settings > Connections Tab > Connections



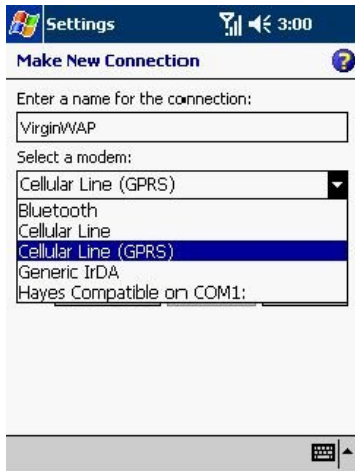
Tap On the Advanced tab > tap on Select networks > Tap On New



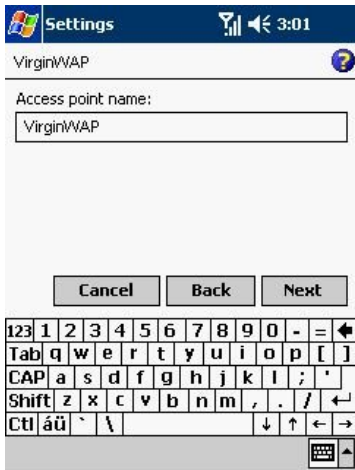
Enter VirginWAP As the Settings Name > Go to Modem tab > Tap New to add a Connection



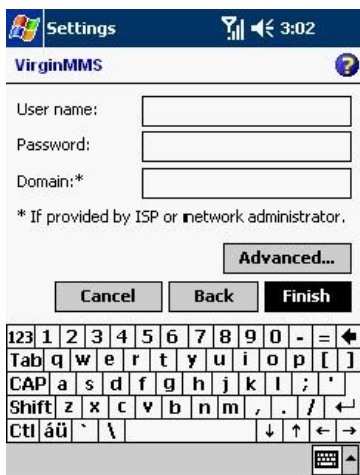
Enter the Connection name VirginWAP > select the modem type Cellular Line (GPRS) > Tap Next



Enter the Access point name VirginWAP > Tap Next



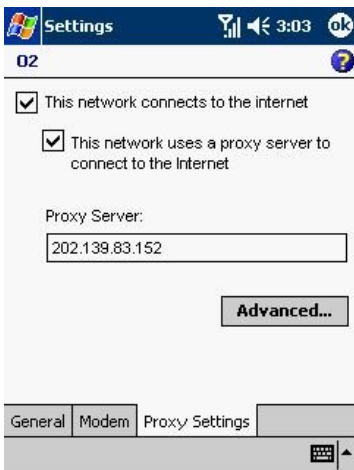
Username, Password, & domain should be left blank > Tap Finish



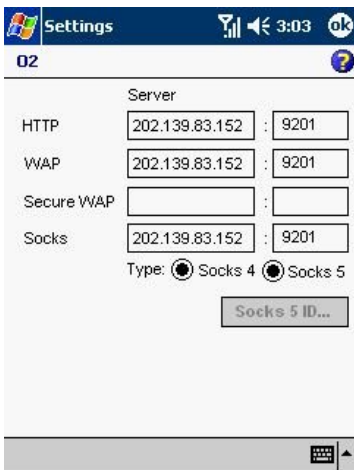
When you finish, you will see the following screen. A connection named VirginWAP is added.



Tap on the Proxy settings tab > Tick this network uses a proxy server to connect to the Internet > enter 202.139.83.152 as the proxy server.



Tap On Advanced > in WAP type 202.139.83.152 > port should be 9201 > Tap OK all the way back out to desktop.



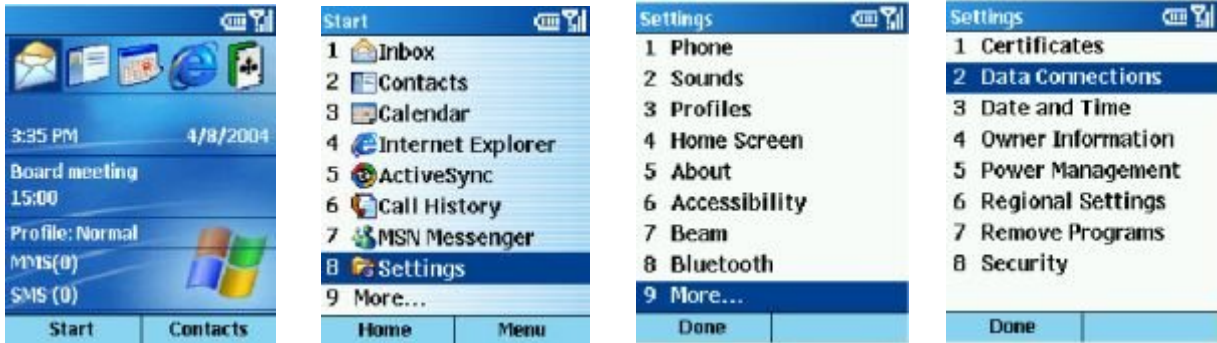
Open Internet Explorer > type `wsp://www.virginvibe.com.au/wap/` in the address bar > Click the go arrow > when you see the virgin site tap tools > then tap options > then tap use current.

The following are the MMS settings For Smart Phones

Please note that you do need to go www.clubimate.com to download the latest Rom for your smartphone2.

Without the latest Rom upgrade, Virgin MMS won't work.

Start> "Settings">"more">"Data connections"



Under "Work Connection", go "menu">"Edit Connections">"GPRS Connections">"menu">"Add".



Fill out the information,
Fill "VirginMMS" under Description
Connects to "Work",
Access point is "VirginMMS"
Leave all other fields blank.



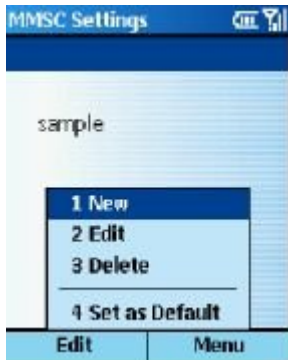
Go "Done">"Done">"Done", Go back to "Data connection", change Work connection to "VirginMMS".



Go to "MMS composer", Go to "settings", change connect Via to "Work".



Then click on "menu", select "MMSC settings", go into the settings with a tick press "menu" select "new"



Name: VirginMMS
 MMSC URL: <http://mms.virginvibe.com.au:8002/>
 Wap Gateway: 202.139.83.152
 Press "done"
 Highlight VirginMMS
 Press "menu"
 set as default



The following are the WAP settings For Smart Phones

Please note that you do need to go www.clubimate.com to download the latest Rom for your smartphone2.

Without the latest Rom upgrade, Virgin MMS won't work.

Start> "Settings">"more">"Data connections"



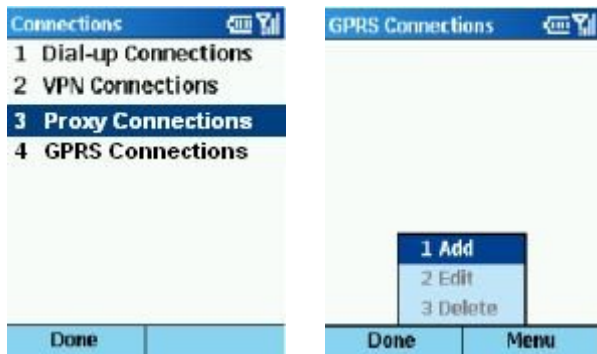
Under "Work Connection", go "menu">"Edit Connections">"GPRS Connections">"menu">"Add".



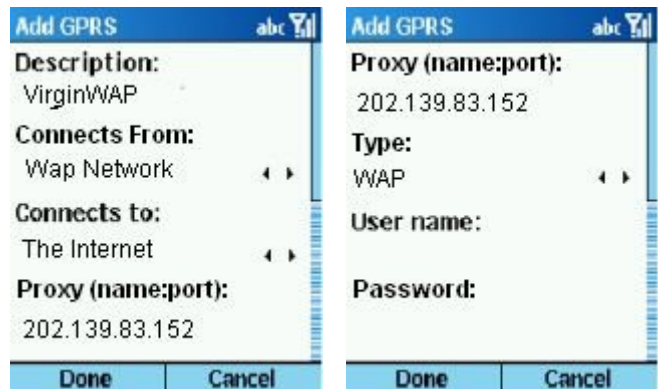
Fill out the information,
Fill "VirginWAP" under Description
Connects to "WAP Network",
Access point is "VirginWAP"
Leave all other fields blank.



Press Done > Done > Select Proxy Connections > Press Menu > select add



Description: VirginWAP
 Connects from: WAP Network
 Connects to: The Internet
 Proxy (name:port): 202.139.83.125:9201
 Type: WAP
 Leave other fields blank.



Press Done > Done > Done > under Internet Connection select VirginWap > press Done > Done



Select Internet explorer > press Menu > select options > Select connections > In select network choose The Internet. > Press Done > Done



Menu > Add favourite

Name: Virgin Vibe

Address (URL): <wsp://www.virginvibe.com.au/wap/>

Leave the rest as is.

